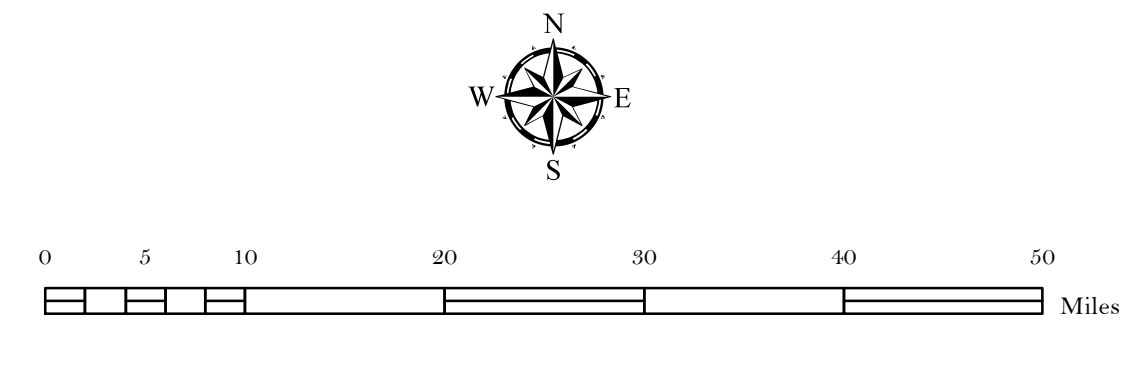
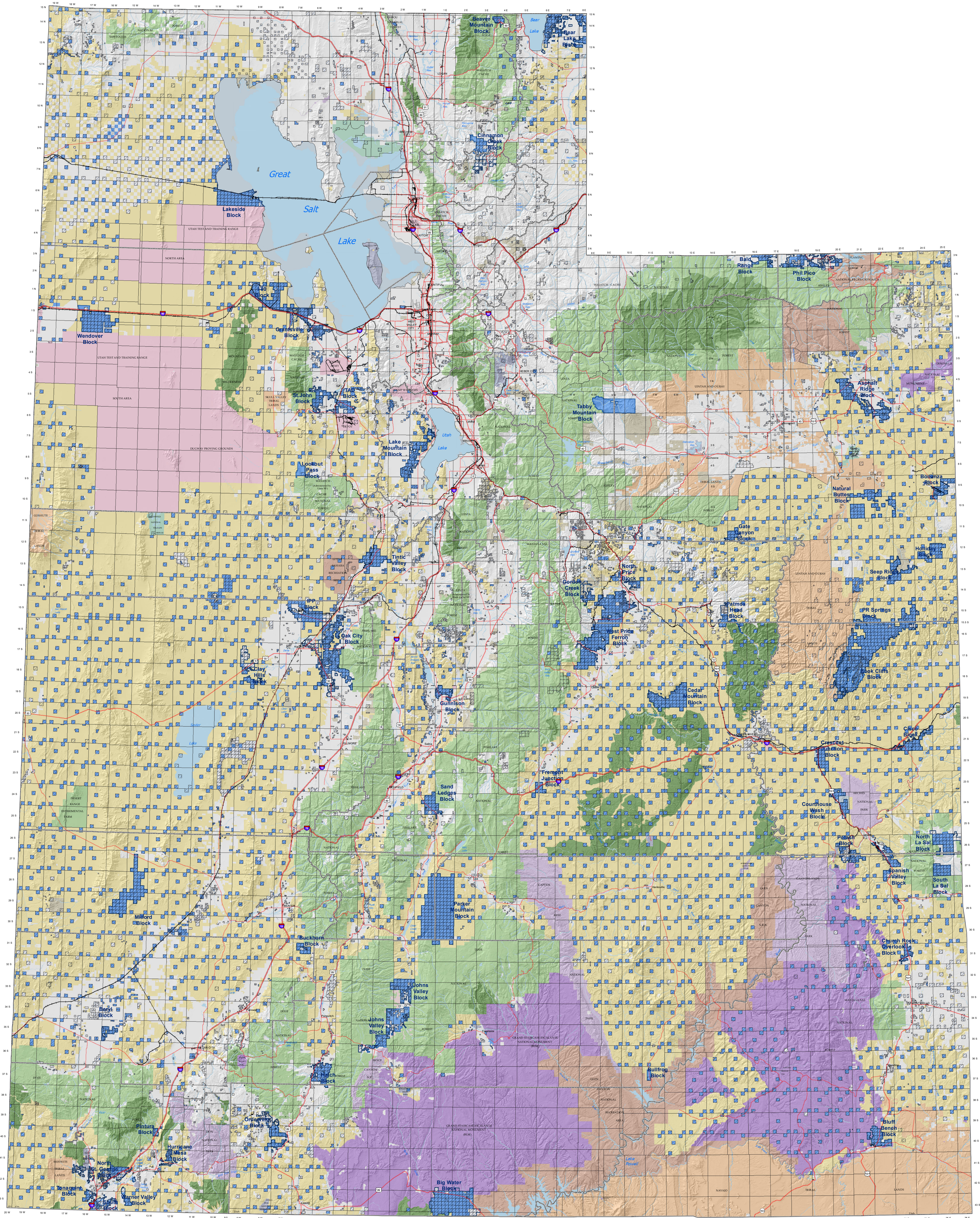


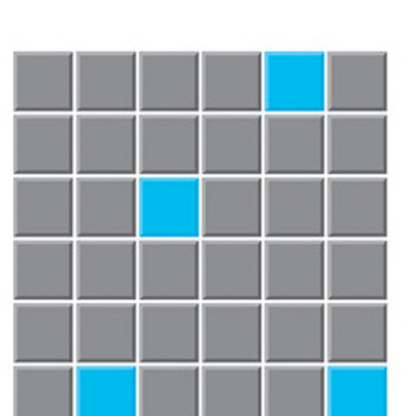
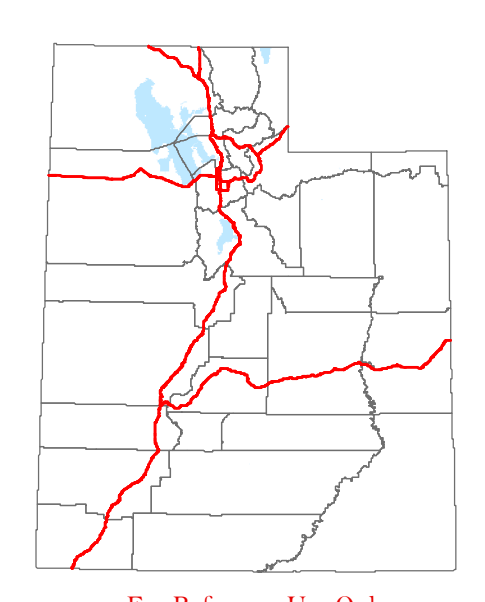
UTAH LAND STATUS AND AREAS OF RESPONSIBILITY

January 2022



- Land Ownership and Administration**
- Bureau of Land Management
 - Bureau of Reclamation
 - Bankhead-Jones Land Use Lands
 - National Recreation Area
 - National Parks & Historic Sites
 - National Monument
 - National Forest
 - National Wilderness Area
 - National Wildlife Refuge
 - Other Federal
 - Military Reservations and Corps of Engineers
 - Private
 - State Trust Lands
 - State Sovereign Land
 - State Parks and Recreation
 - State Wildlife Reserve/Management Area
 - Other State
 - Tribal Lands

- Trust Lands Minerals**
- All Mineral Rights
 - Partial Mineral Rights



State of Utah
School & Institutional
Trust Lands Administration

Data represented on this map is for REFERENCE USE ONLY and is not suitable for legal, engineering, or surveying purposes. Users of the information should consult the appropriate federal, state, or local authority to determine the validity of the information. STLA reserves the right to update this data and to make any changes to this data without notice. STLA is not responsible for any errors or omissions in this data. STLA is not responsible for any damage or loss resulting from the use of this data. STLA is not responsible for any damage or loss resulting from the use of this data. STLA is not responsible for any damage or loss resulting from the use of this data.

For Reference Use Only
Name: SurfaceMineral_20220101_01.mxd, Produced: January 05, 2022 STLA
Coordinate System: NAD 1983 UTM Zone 12N, Projection: Transverse Mercator